

## The following publications feature HistoRx AQUA® technology.

### COLON CANCER

Camp RL, Chung GG, Rimm DL. **Automated Subcellular Localization and Quantification of Protein Expression in Tissue Microarrays.** *Nature Medicine* 8(11): 1323-1327, November, 2002.

Yoo PS, Sullivan CA, Kiang S, Gao W, Uchio EM, Chung GG, Cha CH. **Tissue microarray analysis of 560 patients with colorectal adenocarcinoma: high expression of HuR predicts poor survival.** *Annals of Surgical Oncology* 16(1): 200-7, January 2009.

Gustavson MD, Molinaro AM, Tedeschi G, Camp RL, Rimm DL. **AQUA analysis of thymidylate synthase reveals localization to be a key prognostic biomarker in 2 large cohorts of colorectal carcinoma.** *Archives of Pathology and Laboratory Medicine* 132(11):1746-1752, November 2008.

### BREAST CANCER

Camp RL, Dolled-Filhart M, King BL, Rimm DL. **Quantitative Analysis of Breast Cancer Tissue Microarrays Shows That Both High and Normal Levels of HER2 Expression Are Associated with Poor Outcome.** *Cancer Research* 63: 1445-1448, April 1, 2003.

Camp RL, Dolled-Filhart M, Rimm DL. **X-Tile: A New Bio-Informatics Tool for Biomarker Assessment and Outcome-Based Cut-Point Optimization.** *Clinical Cancer Research* 10: 7252-7259, November 1, 2004.

DiVito KA, Charette LA, Rimm DL, Camp RL. **Long-Term Preservation of Antigenicity on Tissue Microarrays.** *Laboratory Investigation* 84(8): 1071-1078, June 14, 2004.

McCarthy MM, Sznol M, DiVito KA, Camp RL, Rimm DL, Kluger HM. **Evaluating the Expression and Prognostic Value of TRAIL-R1 and TRAIL-R2 in Breast Cancer.** *Clinical Cancer Research* 11(14): 5188-5194, June 15, 2005.

McCabe A, Dolled-Filhart M, Camp RL, Rimm DL. **Automated Quantitative Analysis (AQUA) of In Situ Protein Expression, Antibody Concentration, and Prognosis.** *Journal of the National Cancer Institute* 97(24): 1808-1815, December 21, 2005.

Dolled-Filhart M, McCabe A, Giltneane J, Cregger M, Camp RL, Rimm DL. **Quantitative In Situ Analysis of Beta-Catenin Expression in Breast Cancer Shows Decreased Expression is Associated With Poor Outcome.** *Cancer Research*, 66(10): 5487-5494, May 15, 2006.

Dolled-Filhart M, Rydén L, Cregger M, Jirström K, Harigopal M, Camp RL, Rimm DL. **Classification of Breast Cancer Using Genetic Algorithms and Tissue Microarrays.** *Clinical Cancer Research* 12(21) 6459-6468, November 1, 2006.

Zerkowski MP, Camp RL, Burtneess BA, Rimm DL, Chung GG. **Quantitative Analysis of Breast Cancer Tissue Microarrays Shows High Cox-2 Expression Is Associated with Poor Outcome.** *Cancer Investigation* 25(1): 19-26, February 2007

Pozner-Moulis S, Cregger M, Camp RL, Rimm DL. **Antibody Validation by Quantitative Analysis of Protein Expression Using Expression of Met in Breast Cancer as a Model.** *Laboratory Investigation* 87(3):251-260, March 2007

Pick E, Kluger Y, Giltneane JM, Moeder C, Camp RL, Rimm DL, Kluger HM. **High HSP90 expression is associated with decreased survival in breast cancer.** *Cancer Research* 67(7):2932-7, April 1, 2007.

Chung GG, Zerkowski MP, Ghosh S, Camp RL, Rimm DL. **Quantitative analysis of estrogen receptor heterogeneity in breast cancer** *Laboratory Investigation* 87(7): 662-669, July 2007.

Giltneane JM, Rydén L, Cregger M, Bendahl PO, Jirström K, Rimm DL. **Quantitative measurement of epidermal growth factor receptor is a negative predictive factor for tamoxifen response in hormone receptor positive premenopausal breast cancer.** *Journal of Clinical Oncology* 25(21): 3007-3014, July 20, 2007.

Sherman ME, Rimm DL, Yang XR, Chatterjee N, Brinton LA, Lissowska J, Peplonska B, Szeszenia-Dabrowska N, Zatonski W, Cartun R, Mandich D, Rymkiewicz G, Ligaj M, Lukaszek S, Kordek R, Kalaylioglu Z, Harigopal M, Charrette L, Falk RT, Richesson D, Anderson WF, Hewitt SM, Garcia-Closas M. **Variation in breast cancer hormone receptor and HER2 levels by etiologic factors: A population-based analysis.** *International Journal of Cancer*. 121(5): 1079-85, September 2007.

Moeder CB, Giltneane JM, Harigopal M, Molinaro A, Robinson A, Gelmon K, Huntsman D, Camp RL, Rimm DL; ASCO; CAP. **Quantitative justification of the change from 10% to 30% for human epidermal growth factor receptor 2 scoring in the ASCO/CAP guidelines: tumor heterogeneity in breast cancer and its implications for tissue microarray based assessment of outcome.** *Journal of Clinical Oncology* 25(34): 5418-5425, December 1, 2007.

Plotnikov A, Li Y, Tran TH, Tang W, Palazzo JP, Rui H and Fuchs SY. **Oncogene-Mediated Inhibition of Glycogen Synthase Kinase 3 $\beta$  Impairs Degradation of Prolactin Receptor** *Cancer Research* 68(5): 1354-1361, March 1, 2008.

Nadler Y, Camp RL, Giltne JM, Moeder C, Rimm DL, Kluger HM, Kluger Y. **Expression patterns and prognostic value of Bag-1 and Bcl-2 in breast cancer.** *Breast Cancer Research* 10(2): R35, April 23, 2008.

Harigopal M, Heymann J, Ghosh S, Anagnostou V, Camp RL, Rimm DL. **Estrogen receptor co-activator (AIB1) protein expression by automated quantitative analysis (AQUA) in a breast cancer tissue microarray and association with patient outcome.** *Breast Cancer Research and Treatment* 115(1): 77-85, May 2009.

Giltne JM, Molinaro A, Cheng H, Robinson A, Turbin D, Gelmon K, Huntsman D, Rimm DL. **Comparison of quantitative immunofluorescence with conventional methods for HER2/neu testing with respect to response to trastuzumab therapy in metastatic breast cancer.** *Archives of Pathology and Laboratory Medicine* 132(10): 1635-47, October 2008

Plotnikov A, Li Y, Tran TH, Tang W, Palazzo JP, Rui H, and Fuchs SY. **Oncogene-mediated inhibition of glycogen synthase kinase 3 $\beta$  impairs degradation of prolactin receptor.** *Cancer Research*, 68, 354-61, March 1, 2008.

Wang Y, Dean JL, Millar EK, Tran TH, McNeil CM, Burd CJ, Henshall SM, Utama FE, Witkiewicz A, Rui H, Sutherland RL, Knudsen KE, Knudsen ES. **Cyclin D1b Is Aberrantly Regulated in Response to Therapeutic Challenge and Promotes Resistance to Estrogen Antagonists.** *Cancer Research* 68, 5628-5638, July 15, 2008.

Lindsay J, Jiao X, Sakamaki T, Casimiro MC, Shirley LA, Tran TH, Ju X, Liu M, Li Z, Wang C, Katiyar S, Rao M, Allen KG, Glazer RI, Ge C, Stanley P, Lisanti MP, Rui H and Pestell RG. **ErbB2 induces Notch1 activity and function in breast cancer cells.** *Clinical and Translational Science* (1)2, 107-115 September 10, 2008.

Emerson JW, Dolled-Filhart M, Harris L, Rimm DL, Tuck DP. **Quantitative assessment of tissue biomarkers and construction of a model to predict outcome in breast cancer using multiple imputation.** *Cancer Informatics* 7: 29-40, December 23, 2008.

Mercier I, Casimiro MC, Zhou J, Wang C, Plymire C, Bryant KG, Daumer KM, Sotgia F, Bonuccelli G, Witkiewicz AK, Lin J, Tran TH, Millman J, Frank PG, Jasmin JF, Rui H, Pestell RG, Lisanti MP. **Genetic ablation of caveolin-1 drives estrogen-hypersensitivity and the development of DCIS-like mammary lesions.** *American Journal of Pathology* 174(4): 1172-1190, April 2009.

Millar EK, Dean JL, McNeil CM, O'Toole SA, Henshall SM, Tran T, Lin J, Quong A, Comstock CE, Witkiewicz A, Musgrove EA, Rui H, Lemarchand L, Setiawan VW, Haiman CA, Knudsen KE, Sutherland RL, Knudsen ES. **Cyclin D1b protein expression in breast cancer is independent of cyclin D1a and associated with poor disease outcome** *Oncogene* 28(15): 1812-1820, April 16, 2009.

Giltne JM, Moeder CB, Camp RL, Rimm DL. **Quantitative multiplexed analysis of ErbB family coexpression for primary breast cancer prognosis in a large retrospective cohort.** *Cancer* 115(11): 2400-2409, June 1, 2009.

Gustavson MD, Bourke-Martin B, Reilly DM, Cregger M, Williams C, Tedeschi G, Pinard R, Christiansen J. **Development of an unsupervised pixel-based clustering algorithm for compartmentalization of immunohistochemical expression using Automated QUantitative Analysis.** *Applied Immunohistochemistry & Molecular Morphology* 17(4): 329-337, July 2009.

Popov VM, Zhou J, Shirley LA, Quong J, Yeow WS, Wright JA, Wu K, Rui H, Vadlamudi RK, Jiang J, Kumar R, Wang C, Pestell RG. **The cell fate determination factor DACH1 is expressed in estrogen receptor-alpha-positive breast cancer and represses estrogen receptor-alpha signaling.** *Cancer Research* 69(14): 5752-5760, July 15, 2009.

Faratian D, Goltsov A, Lebedeva G, Sorokin A, Moodie S, Mullen P, Kay C, Um IH, Langdon S, Goryanin I, Harrison DJ. **Systems Biology Reveals New Strategies for Personalizing Cancer Medicine and Confirms the Role of PTEN in Resistance to Trastuzumab.** *Cancer Research* [Epub ahead of print] July 28, 2009.

## GASTRIC CANCER

Kidd M, Eick G, Shapiro MD, Camp RL, Mane SM, Modlin IM. **Microsatellite Instability and Gene Mutations in Transforming Growth Factor-Beta Type II Receptor are Absent in Small Bowel Carcinoid Tumors.** *Cancer* 103(2): 229-236, Jan 15, 2005.

Kidd, M, Modlin IM, Mane SM, Camp RL, Eick G, Latich I. **The Role of Genetic Markers—NAP1L1, MAGE-D2, and MTA1—In Defining Small-Intestinal Carcinoid Neoplasia.** *Annals of Surgical Oncology* 13(2): 253-262, February 2006.

Kidd M, Modlin IM, Mane SM, Camp RL, Eick GN, Latich I, Zikusoka MN. **Utility of Molecular Genetic Signatures in the Delineation of Gastric Neoplasia.** *Cancer* 106(7):1480-1488, April 1, 2006.

Kidd M, Modlin IM, Shapiro MD, Camp RL, Mane SM, Usinger W, Murren JR. **CTGF, intestinal stellate cells and carcinoid fibrogenesis.** *Cancer Epidemiology, Biomarkers & Prevention* 21(39): 5208-5216, October 21, 2007.

Ghosh S, Sullivan CA, Zerkowski MP, Molinaro AM, Rimm DL, Camp RL, Chung GG. **High levels of vascular endothelial growth factor and its receptors (VEGFR-1, VEGFR-2, neuropilin-1) are associated with worse outcome in breast cancer.** *Human Pathology* ;39(12):1835-43, December 2008

Sullivan CA, Ghosh S, Ocal IT, Camp RL, Rimm DL, Chung GG. **Microvessel area using automated image analysis is reproducible and is associated with prognosis in breast cancer.** *Human Pathology* 40(2):156-65, February 2009.

Kolesar J, Huang W, Eickhoff J, Hahn K, Alberti D, Attia S, Schelman W, Holen K, Traynor A, Ivy P, Wilding G. **Evaluation of mRNA by Q-RT-PCR and protein expression by AQUA of the M2 subunit of ribonucleotide reductase (RRM2) in human tumors.** *Cancer Chemotherapy and Pharmacology* 64(1): 79-86, June 2009.

## PROSTATE CANCER

Rubin MA, Zerkowski MP, Camp RL, Kuefer R, Hofer MD, Chinnaiyan AM, Rimm DL. **Quantitative Determination of Expression of the Prostate Cancer Protein alpha-Methylacyl-CoA Racemase Using Automated Quantitative Analysis (AQUA).** *American Journal of Pathology* 164(3): 831-840, March 2004.

Mertz KD, Demichelis F, Kim R, Schraml P, Storz M, Diener P, Moch H, Rubin MA. **Automated immunofluorescence analysis defines microvessel area as a prognostic parameter in clear cell renal cell cancer.** *Human Pathology* 38(10): 1454-1462, October 2007.

Warren M, Twohig M, Pier T, Eickhoff J, Lin CY, Jarrard D and Huang W. **Protein Expression of Matriptase and Its Cognate Inhibitor HAI-1 in Human Prostate Cancer: a tissue microarray and automated quantitative analysis.** *Applied Immunohistochemistry and Molecular Morphology* 17(1):23-30, January 2009.

## HEAD AND NECK CANCER

Yu Z, Weinberger PM, Haffty BG, Sasaki C, Zerillo C, Joe J, Kowalski D, Dziura J, Camp RL, Rimm DL, Psyrri A. **Cyclin D1 is a Valuable Prognostic Marker in Oropharyngeal Squamous Cell Carcinoma.** *Clinical Cancer Research* 11:1160-1166, February 1, 2005.

Yu Z, Weinberger PM, Provost E, Haffty BG, Sasaki C, Joe J, Camp RL, Rimm DL, Psyrri A. **Beta-Catenin Functions Mainly as an Adhesion Molecule in Patients With Squamous Cell Cancer of the Head and Neck.** *Clinical Cancer Research* 11: 2471-2477, April 1, 2005.

Psyrri A, Yu Z, Weinberger PM, Sasaki C, Haffty B, Camp R, Rimm D, Burtneess BA. **Quantitative Determination of Nuclear and Cytoplasmic Epidermal Growth Factor Receptor Expression in Oropharyngeal Squamous Cell Cancer by Using Automated Quantitative Analysis.** *Clinical Cancer Research* 11(16): 5856-5862, August 15, 2005.

Weinberger PM, Yu Z, Haffty BG, Kowalski D, Harigopal M, Brandsma J, Sasaki C, Joe J, Camp RL, Rimm DL, Psyrri A. **Molecular Classification Identifies a Subset of Human Papillomavirus-Associated Oropharyngeal Cancers With Favorable Prognosis.** *Journal of Clinical Oncology* 24(5): 736-747, February 10, 2006.

Psyrri A, Egleston B, Weinberger P, Yu Z, Kowalski D, Sasaki C, Haffty B, Rimm D, Burtneess B. **Correlates and determinants of nuclear epidermal growth factor receptor content in an oropharyngeal cancer tissue microarray.** *Cancer Epidemiology, Biomarkers & Prevention* 17(6): 1486-1492, June 2008.

## LUNG CANCER

Giltneane JM, Murren JR, Rimm DL, King BL. **AQUA and FISH Analysis of HER-2/*Neu* Expression and Amplification in a Small Cell Lung Carcinoma Tissue Microarray.** *Histopathology* 49(2): 161-169, August 2006.

Zheng Z, Chen T, Li X, Haura E, Sharma A, Bepler G. **DNA synthesis and repair genes RRM1 and ERCC1 in lung cancer.** *New England Journal of Medicine* 356(8):800-8, February 22, 2007.

Zheng Z, Li X, Schell MJ, Chen T, Boulware D, Robinson L, Sommers E, Bepler G. **Thymidylate synthase in situ protein expression and survival in stage I nonsmall-cell lung cancer.** *Cancer* 112(12): 2765-2773, June 15, 2008.

Anagnostou VK, Syrigos KN, Bepler G, Homer RJ, Rimm DL. **Thyroid transcription factor 1 is an independent prognostic factor for patients with stage I lung adenocarcinoma.** *Journal of Clinical Oncology* 27(2): 271-278, January 10, 2009.

Anagnostou VK, Bepler G, Syrigos KN, Tanoue L, Gettinger S, Homer RJ, Boffa D, Detterbeck F, Rimm DL. **High expression of mammalian target of rapamycin is associated with better outcome for patients with early stage lung adenocarcinoma.** *Clinical Cancer* 15(12): 4157-4164, June 15, 2009.

Scott KL, Kabbarah O, Liang MC, Ivanova E, Anagnostou V, Wu J, Dhakal S, Wu M, Chen S, Feinberg T, Huang J, Saci A, Widlund HR, Fisher DE, Xiao Y, Rimm DL, Protopopov A, Wong KK, Chin L. **GOLPH3 modulates mTOR signalling and rapamycin sensitivity in cancer.** *Nature* 459(7250): 1085-1090, June 25, 2009.

Gao J, Zheng Z, Rawal B, Schell MJ, Bepler G, Haura EB. **Mirk/Dyrk1B, a novel therapeutic target, mediates cell survival in non-small cell lung cancer cells.** *Cancer Biology & Therapy* 8(17) [Epub ahead of print], September 20, 2009.

## MELANOMA

Berger AJ, Davis DW, Tellez C, Prieto VG, Gershenwald JE, Johnson MM, Rimm DL, Bar-Eli M. **Automated Quantitative Analysis of Activator Protein-2-Alpha Subcellular Expression In Melanoma Tissue Microarrays Correlates With Survival Prediction.** *Cancer Research* 65(23):11185-11192, December 1, 2005.

Garraway LA, Widlund HR, Rubin MA, Getz G, Berger AJ, Ramaswamy S, Beroukheim R, Milner DA, Granter SR, Du J, Lee C, Wagner SN, Li C, Golub TR, Rimm DL, Meyerson ML, Fisher DE, Sellers WR. **Integrative Genomic Analyses Identify *MITF* as a Lineage Survival Oncogene Amplified in Malignant Melanoma.** *Nature* 436: 117-122, July 7, 2005.

McCarthy MM, DiVito KA, Sznol M, Kovacs D, Halaban R, Berger AJ, Flaherty KT, Camp RL, Lazova R, Rimm DL, Kluger HM. **Expression of Tumor Necrosis Factor-Related Apoptosis-Inducing Ligand Receptors 1 and 2 in Melanoma.** *Clinical Cancer Research* 12(12): 3856-3863, June 15, 2006.

Kluger HM, McCarthy MM, Alvero AB, Sznol M, Ariyan S, Camp RL, Rimm DL, Mor G. **The X-linked inhibitor of apoptosis protein (XIAP) is up-regulated in metastatic melanoma, and XIAP cleavage by Phenoxodiol is associated with Carboplatin sensitization.** *Journal of Translational Medicine* 26; 5:6. January 26, 2007.

Shields JM, Thomas NE, Cregger M, Berger AJ, Leslie M, Torrice C, Hao H, Penland S, Arbiser J, Scott G, Zhou T, Bar-Eli M, Bear JE, Der CJ, Kaufmann WK, Rimm DL, Sharpless NE. **Lack of Extracellular Signal-Regulated Kinase Mitogen-Activated Protein Kinase Signaling Shows a New Type of Melanoma.** *Cancer Research*, 67(4):1502-1512, February 15, 2007.

Kreizenbeck GM, Berger AJ, Subtil A, Rimm DL, Gould Rothberg BE. **Prognostic significance of cadherin-based adhesion molecules in cutaneous malignant melanoma.** *Cancer Epidemiology, Biomarkers & Prevention* 17(4): 949-958, April 2008.

Rothberg BE, Moeder CB, Kluger H, Halaban R, Elder DE, Murphy GF, Lazar A, Prieto V, Duncan LM, Rimm DL. **Nuclear to non-nuclear Pmel17/gp100 expression (HMB45 staining) as a discriminator between benign and malignant melanocytic lesions.** *Modern Pathology* 21(9):1121-9, September 2008.

Jilaveanu L, Zito C, Lee SJ, Nathanson KL, Camp RL, Rimm DL, Flaherty KT, Kluger HM. **Expression of sorafenib targets in melanoma patients treated with carboplatin, paclitaxel and sorafenib.** *Clinical Cancer Research* 15(3):1076-1085, February 1, 2009.

Chien AJ, Moore EC, Lonsdorf AS, Kulikauskas RM, Rothberg BG, Berger AJ, Major MB, Hwang ST, Rimm DL, Moon RT. **Activated Wnt/beta-catenin signaling in melanoma is associated with decreased proliferation in patient tumors and a murine melanoma model.** *Proceedings of the National Academy of Sciences* 106(4):1193-1198, January 27, 2009.

Gould Rothberg BE, Bracken MB, Rimm DL. **Tissue biomarkers for prognosis in cutaneous melanoma: a systematic review and meta-analysis.** *Journal of the National Cancer Institute* 101(7):452-474, April 1, 2009.

Horst B, Gruvberger-Saal SK, Hopkins BD, Bordone L, Yang Y, Chernoff KA, Uzoma I, Schwitter V, Liebau J, Nowak NJ, Brunner G, Owens D, Rimm DL, Parsons R, Celebi JT. **Gab2-mediated signaling promotes melanoma metastasis.** *American Journal of Pathology* 174(4):1524-1533, April, 2009.

Aziz SA, Davies M, Pick E, Zito C, Jilaveanu L, Camp RL, Rimm DL, Kluger Y, Kluger HM. **Phosphatidylinositol-3-kinase as a therapeutic target in melanoma.** *Clinical Cancer Research* 15(9):3029-3036, May 1, 2009.

## OVARIAN CANCER

Psyri A, Kountourakis P, Scorilas A, Markakis S, Camp R, Kowalski D, Diamandis EP, Dimopoulos MA. **Human tissue kallikrein 7, a novel biomarker for advanced ovarian carcinoma using a novel in situ quantitative method of protein expression.** *Annals of Oncology* 19(7): 1271-1277, July 2008

Attia S, Kolesar J, Mahoney MR, Pitot HC, Laheru D, Heun J, Huang W, Eickhoff J, Erlichman C and Holen KD. **A phase 2 consortium (P2C) trial of 3-aminopyridine-2-carboxaldehyde thiosemicarbazone(3-AP) for advanced adenocarcinoma of the pancreas.** *Investigational New Drugs* 26(4): 369-79, August 2008

Kountourakis P, Psyri A, Scorilas A, Camp R, Markakis S, Kowalski D, Diamandis EP, Dimopoulos MA. **Prognostic value of kallikrein-related peptidase 6 protein expression levels in advanced ovarian cancer evaluated by automated quantitative analysis (AQUA).** *Cancer Science* 99(11):2224-9, November 2008.

## PANCREATIC CANCER

Chung GG, Yoon HH, Zerkowski MP, Ghosh S, Thomas L, Harigopal M, Charette LA, Salem RR, Camp RL, Rimm DL, Burtness BA. **Vascular Endothelial Growth Factor, FLT-1, and FLK-1 Analysis in a Pancreatic Cancer Tissue Microarray.** *Cancer* 106(8): 1677-1684, April 15, 2006.

Attia S, Kolesar J, Mahoney MR, Pitot HC, Laheru D, Heun J, Huang W, Eickhoff J, Erlichman C, Holen KD. **A phase 2 consortium (P2C) trial of 3-aminopyridine-2-carboxaldehyde thiosemicarbazone (3-AP) for advanced adenocarcinoma of the pancreas.** *Investigational New Drugs* 26(4): 369-379, August 2008.

Akita H, Zheng Z, Takeda Y, Kim C, Kittaka N, Kobayashi S, Marubashi S, Takemasa I, Nagano H, Dono K, Nakamori S, Monden M, Mori M, Doki Y, Bepler G. **Significance of RRM1 and ERCC1 expression in resectable pancreatic adenocarcinoma.** *Oncogene* [Epub ahead of print], June 22, 2009.

## METHODS, REVIEWS & COMMENTARIES RELATED TO AQUA® ANALYSIS

Giltneane JM, Rimm DL. **Technology Insight: Identification of Biomarkers with Tissue Microarray Technology.** *Nature Clinical Practice Oncology* 1(2) 104-11, December 2004.

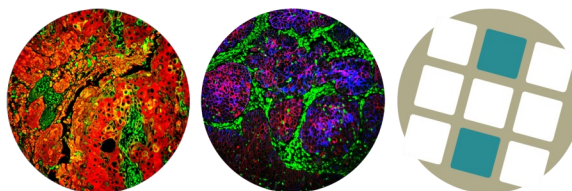
Cregger M, Berger AJ, Rimm DL. **Immunohistochemistry and quantitative analysis of protein expression.** *Archives of Pathology and Laboratory Medicine* 130 (7):1026-30, July 2006.

Rimm, DL. **What Brown Cannot Do for You.** [Commentary.] *Nature Biotechnology* 24(8): 914-916, August 2006.

Gazdar AF. **DNA Repair and Survival in Lung Cancer – The Two Faces of Janus.** [Perspective] *New England Journal of Medicine* 356:771-773, February 22, 2007.

Moeder CB, Giltneane JM, Moulis SP, Rimm DL. **Quantitative, fluorescence-based in-situ assessment of protein expression.** [Book Chapter] *Methods in Molecular Biology* 520:163-175, 2009.

Faratian D, Clyde RG, Crawford JW, Harrison DJ. **Systems pathology-taking molecular pathology into a new dimension.** *Nature Reviews Clinical Oncology* 6(8):455-464, August, 2009.



HistoRx